

DESTONER TS 200

Dry stoners are used to separate granular material according to the specific weight into two fractions.

Mainly it is used for the elimination of heavy impurities, such as stones, metallic particles etc. from coffee, grain, pulse etc.

Grains or particles of almost identical size are fed continuously on the separating deck to ensure a uniform bed of material over the whole width of the deck surface.

For better feeding results a pre bin with an automatic actuator drive is used.

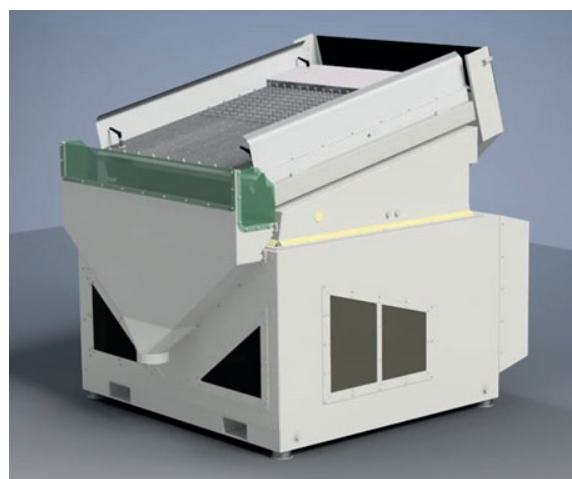
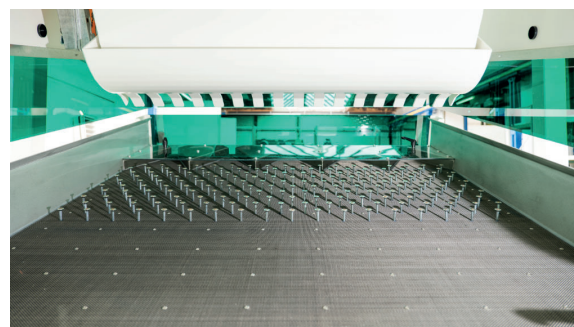
The deck is fluidised by a completely uniform pressurised air system and lifts the light material.

The heavy material (for instance stones) sinks towards the bottom and get in contact with the deck surface.

The deck itself is powered by a well-balanced eccentric drive which moves the deck at low amplitude and high frequency up hill. The heavy material contacting a specially designed square wire deck surface moves up hill (stone outlet) while the light material fluidised by the air system moves down hill due to gravitational pull.

This system allows a more exact adjusting what leads to better sorting results.

The inclination is adjustable from 6° to 20° to ensure an efficient residual discharge to facilitate a rapid table discharge.



Capacity		
Wheat		15,0 t/h
Soybeans		12,5 t/h
Raw coffee		10,0 t/h
Barley		14,0 t/h
Screen area		1,90 m²
Motors		
Fan drive		7,50 kW
Reciprocating drive		1,10 kW
Air volume		
Air requirements (Destoner)	235 m³/min	
Air requirements (Dust hood)	275 m³/min	300 Pa
Dimensions		
Machine depth		2161 mm
Machine width		2030 mm
Machine height		2884 mm
Weight net		
Destoner		1235 kg
Total (Dusthood, Prebin)		1665 kg

Technical data can vary for certain of the above due to continued development or a different machine composition.